

GERTRUDE STEIN THE WORLD

CONTENTS: ROSE IS A ROSE • WILLIE IS WILLIE • EYES A
SURPRISE • WILLIE AND HIS SINGING • WILLIE AND HIS
LION • IS A LION NOT A LION • ROSE AND WILLIE'S LION
ROSE THINKING • A FAVORITE COLOR • BRINGING BILLIE
BACK • BRINGING BACK BILLIE TO WILLIE • ONCE UPON
A TIME • A CHAIR ON THE MOUNTAIN • THE GOING UP
WITH THE CHAIR • THE TRIP • THIS WAS HER TRIP • UP
THE HILL • DAY AND NIGHT • THE NIGHT • THE NIGHT
NIGHT • ROSE SAW IT CLOSE • NIGHT • THE MORNING
THE TREES AND THE ROCKS UNDER THEM • ROSE
DOES SOMETHING • ROSE AND THE BELL • ROSE AND
THE BELL • ONCE UPON A TIME • THE GREEN GRASS
MEADOW • THE LAST HOUR • THERE • A LIGHT • THE END

IS ROUND

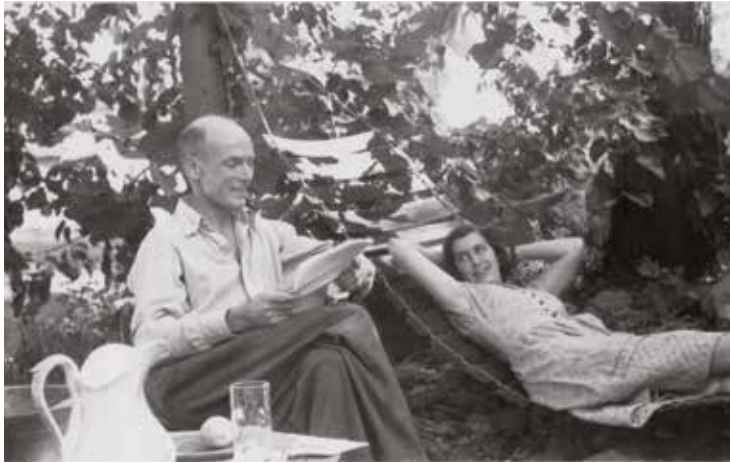
PICTURES BY CLEMENT HURD

FOREWORD BY THACHER HURD

AFTERWORD BY EDITH THACHER HURD



Clement Hurd drawing, Ferrisburgh, Vermont, 1939.



Clement and Edith Hurd, North Ferrisburgh, Vermont, 1949.



LEFT: Edith, Thacher, and Clement Hurd, 1949. RIGHT: Thacher and Clement Hurd, Berkeley, California, 1983.



ROSE IS A ROSE

1



WILLIE IS WILLIE

2



EYES A SURPRISE

3



WILLIE AND HIS SINGING

4



WILLIE AND HIS LION

5



IS A LION NOT A LION

6



ROSE THINKING

8

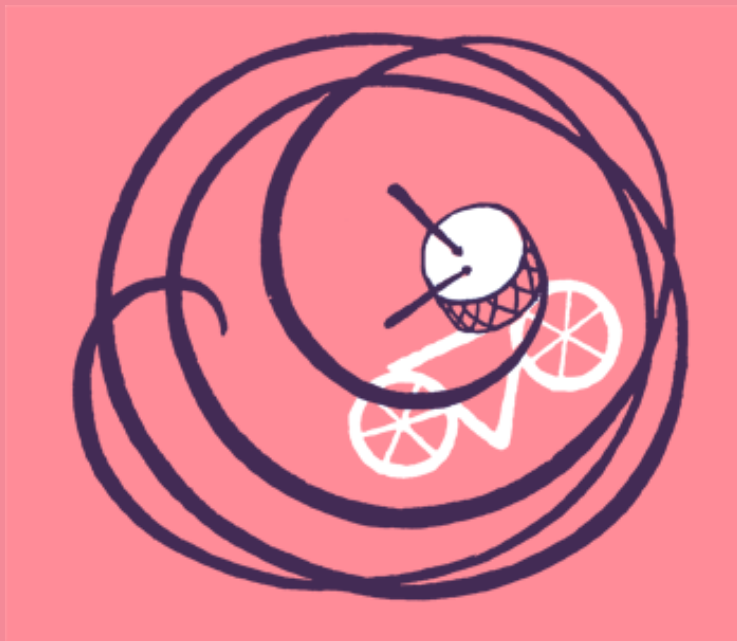
9

A FAVORITE COLOR



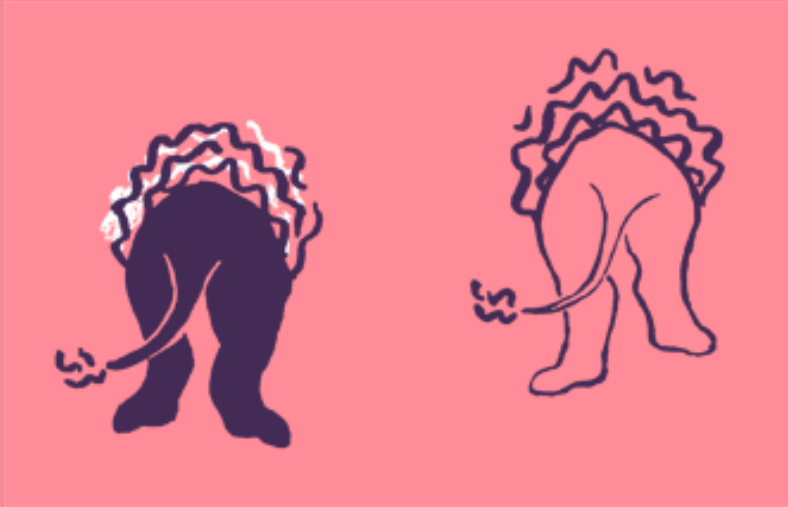
BRINGING BACK BILLIE TO WILLIE

11



ONCE UPON A TIME

12





A CHAIR ON THE MOUNTAIN

13



14

THE GOING UP WITH THE CHAIR

15

THE TRIP





17

UP THE HILL



18

DAY AND NIGHT



20

THE NIGHT





23 NIGHT



THE MORNING **24**



26

ROSE DOES SOMETHING



28

ROSE AND THE BELL



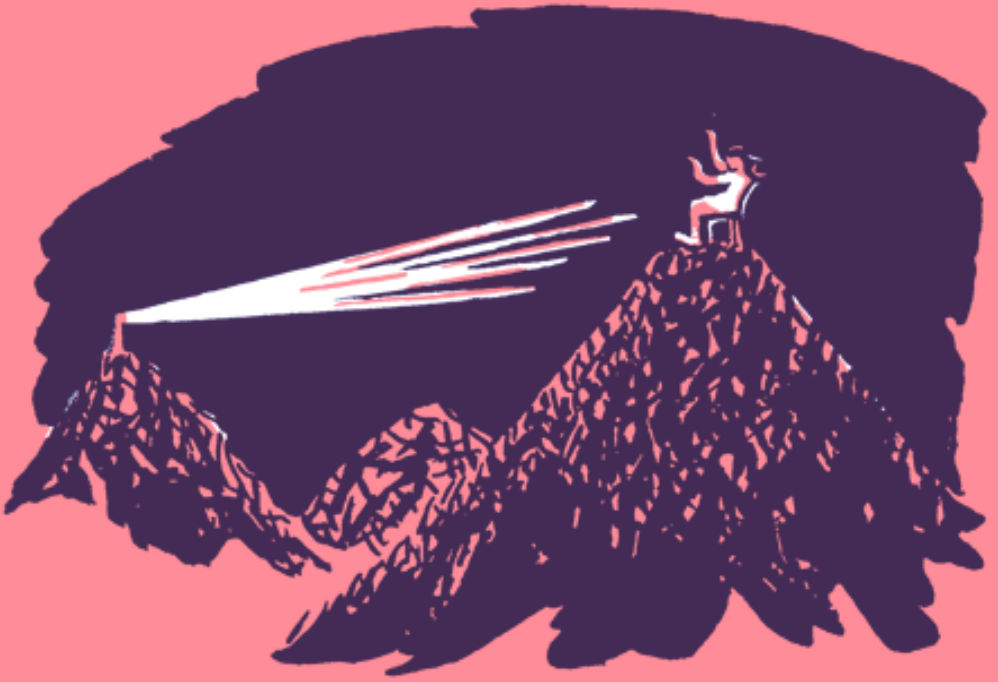


THE LAST HOUR

31



THERE **32**



A LIGHT **33**



THE END **34**



Gertrude Stein, the big dog Love, and Rose on the terrace of the farmhouse at Bilignin, France, circa 1938.



“French Rose” and Mexican Chihuahua, Pépé, at Bilignin, circa 1938.



TOP: Clement Hurd's rugs displayed at W. & J. Sloane, New York, 1939. BOTTOM: A fragment of the wallpaper designed by Clement Hurd for Katzenbach and Warren, New York, 1940.