


4-7/8"
4.875"
123.825mm

4-7/8"
4.875"
123.825mm

7-5/16"
7.3125"
185.738mm




SPANISH FOR LANDSCAPING

- Lesson 1: Commands
- Lesson 2: Safety
- Lesson 3: Equipment Operation & Maintenance
- Lesson 4: Landscaping Installation
- Lesson 5: Property Maintenance
- Lesson 6: Clean Up
- Lesson 7: Hiring
- Lesson 8: Work Schedule
- Lesson 9: Praising Employees/Co-Workers
- Lesson 10: Employee Problems

* Each lesson is on a separate track. This allows you to skip directly to the lesson that you want to practice or review.


SPANISH ON THE JOB CD COLLECTION

- Spanish for Educators
- Spanish for Law Enforcement
- Spanish for Health Care
- Spanish for Medical Receptionists
- Spanish for Restaurants
- Spanish for Human Resources
- Spanish for Housekeeping
- Spanish for Banking
- Spanish for Retail Business
- Spanish for Real Estate
- Spanish for Construction
- Spanish for Landscaping
- Conversational Spanish



KAMMS 5066


© 2006 KAMMS Consulting, LLC
PO Box 2441 Ventnor, NJ 08406
All Rights Reserved.
www.spanishonthejob.com





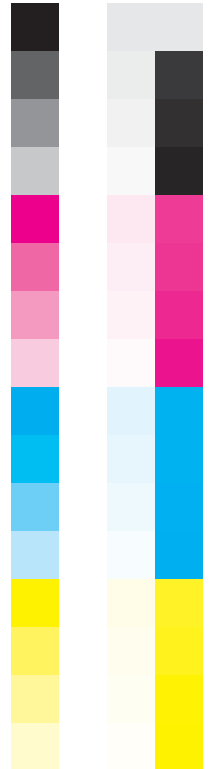
SPANISH ON THE JOB

Spanish for landscaping

LANDSCAPING GUIDE



IMPROVE COMMUNICATION WITH SPANISH-SPEAKING LANDSCAPING CREWS

4-7/8"
4.875"
123.825mm

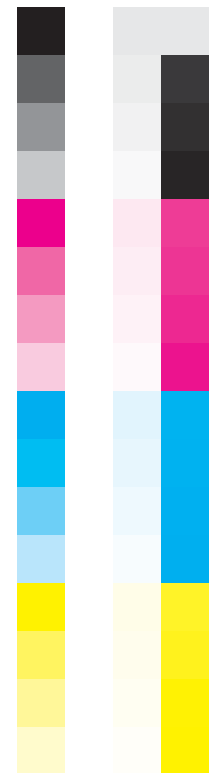
4-7/8"
4.875"
123.825mm

WELCOME TO SPANISH FOR LANDSCAPING

¡OJO! Important Notes

- In Spanish, the ending of some words will be an -o or an -a depending on whether you are speaking about a man or a woman.
- This CD uses the -o ending throughout in order to simplify the language learning process.
- Remember to use the -o ending when describing a man, the -a ending when describing a woman
- You can listen to the CD while driving, exercising or relaxing at home. The important thing is to listen to the CD many times. The more you listen the more you will remember!
- As you learn and progress you will be able to recite the Spanish translation in the pauses after the native and non-native speakers.
- The listening guide includes every word and phrase from the CD with its phonetic pronunciation. Use it as a guide while listening to the CD, or take it to work to use as a quick reference guide.

Can I help you?	¿Puedo ayudarle?	(poo-eh-doh ah-yoo-dahr-leh)
Why?	¿Por qué?	(pohr keh)
Why are you late?	¿Por qué está tarde?	(pohr keh eh-stah tahr-deh)
Why didn't you come to work?	¿Por qué no vino a trabajar?	(pohr keh noh bee-noh ah trah-bah-hahr)
Why aren't you at work?	¿Por qué no está en el trabajo?	(pohr keh noh eh-stah ehn ehl trah-bah-hoh)
Why didn't you call?	¿Por qué no llamó?	(pohr keh noh yah-moh)
You need...	Necesita...	(neh-seh-see-tah)
You need to be on time.	Necesita llegar a tiempo.	(neh-seh-see-tah yeh-gahr ah tee-ehm-poh)
You need to be here earlier.	Necesita llegar más temprano.	(neh-seh-see-tah yeh-gahr mahs tehmprah-noh)
You need to be careful.	Necesita tener cuidado.	(neh-seh-see-tah teh-nehr koo-ee-dah-doh)
Tell me...	Dígame...	(dee-gah-meh)
Tell me if you have a problem.	Dígame si tiene un problema.	(dee-gah-meh see tee-eh-neh oon proh-bleh-mah)
Tell me if you need something.	Dígame si necesita algo.	(dee-gah-meh see neh-seh-see-tah ahlgoh)
You should...	Debe...	(deh-beh)
You should not...	No debe...	(noh deh-beh)
Do not...	No...	(noh)
Do not do it.	No lo haga.	(noh loh ah-gah)
Do not be late.	No llegue tarde.	(noh yeh-geh tahr-deh)
Do not use foul language.	No hable grocerías.	(noh ah-bleh groh-seh-ree-ahs)
This is a warning.	Esta es una advertencia.	(eh-stah ehs oo-nah ahd-behr-tehn-see-ah)
You are fired.	Está despedido.	(eh-stah deh-speh-dee-doh)
Return your tools.	Devuelva sus herramientas.	(deh-boo-ehl-bah soos eh-rrah-mee-ehntahs)
Leave.	Salga.	(sahl-gah)
Leave the jobsite.	Salga del área de trabajo.	(sahl-gah dehl ah-reh-ah deh trah-bah-hoh)



7-5/16"
7.3125"
185.738mm

4-7/8"
4.875"
123.825mm

4-7/8"
4.875"
123.825mm

SPANISH FOR LANDSCAPING

Lesson 8: Work Schedule (*Horario del Trabajo*)

This will be your...	Este será su...	(eh-steh seh-rah soo)
This will be your shift.	Este será su turno.	(eh-steh seh-rah soo toor-noh)
This will be your schedule.	Este será su horario.	(eh-steh seh-rah soo oh-rah-ree-oh)
These will be your days off.	Estos serán sus días libres.	(eh-stohs seh-rahnh soos dee-ahs lee-brehs)
Can you work?	¿Puede trabajar?	(poo-eh-deh trah-bah-hahr)
When can you work?	¿Cuándo puede trabajar?	(koo-ahn-doh poo-eh-deh trah-bah-hahr)
Be here...	Esté aquí...	(eh-steh ah-kee)
Be here at 6.	Esté aquí a las seis.	(eh-steh ah-kee ah lahs seh-ees)
Your break...	Su descanso...	(soo deh-skahn-soh)
Your break is at 4.	Su descanso es a las cuatro.	(soo deh-skahn-soh ehs ah lahs koo-ah-troh)
in the morning	por la mañana	(pohr lah mah-nyah-nah)
in the afternoon	por la tarde	(pohr lah tahr-deh)
at night	por la noche	(pohr lah noh-cheh)
You are finished.	Ha terminado.	(ah tehr-mee-nah-doh)
You are finished for today.	Ha terminado por hoy.	(ah tehr-mee-nah-doh pohr oh-ee)
You can...	Puede...	(poo-eh-deh)
You can go home.	Puede irse a casa.	(poo-eh-deh eer-seh ah kah-sah)
Can you work more hours?	¿Puede trabajar más horas?	(poo-eh-deh trah-bah-hahr mahs oh-rah)
How many?	¿Cuántas?	(koo-ahn-tahs)
How many hours did you work?	¿Cuántas horas trabajó?	(koo-ahn-tahs oh-rah trah-bah-hoh)
How many hours do you want to work?	¿Cuántas horas quiere trabajar?	(koo-ahn-tahs oh-rah kee-eh-reh trah-bah-hahr)
Clock in.	Marque la entrada.	(mahr-keh lah ehn-trah-dah)
Clock out.	Marque la salida.	(mahr-keh lah sah-lee-dah)
Did you clock in?	¿Marcó al entrar?	(mahr-koh ahl ehn-trahr)
Did you clock out?	¿Marcó al salir?	(mahr-koh ahl sah-leer)

Lesson 9: Praising Your Employees (*Elogiando Sus Empleados*)

Good job!	¡Buen trabajo!	(boo-ehn trah-bah-hoh)
Well done!	¡Bien hecho!	(bee-ehn eh-choh)
It looks good!	¡Se ve bien!	(seh beh bee-ehn)
I trust you!	¡Confío en usted!	(kohn-fee-oh ehn oo-stehd)
You're a good employee!	¡Usted es un buen empleado!	(oo-stehd ehs oon boo-ehn ehm-pleh-ah-doh)
Keep working together!	¡Sigán trabajando juntos!	(see-gahn trah-bah-hahn-doh hoon-tohs)
We make a good team!	¡Hacemos un buen equipo!	(ah-seh-mohs oon boo-ehn eh-kee-poh)
I'm proud of you!	¡Estoy orgulloso(a) de usted!	(eh-stoh-ee ohr-goo-yoh-soh(sah) deh oo-stehd)

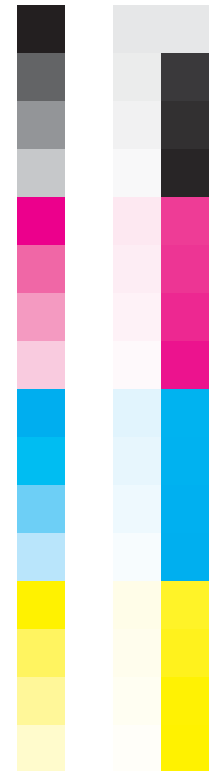
Lesson 10: Employee Problems (*Problemas de Los Empleados*)

problem	problema	(proh-bleh-mah)
Is there a problem?	¿Hay un problema?	(ah-ee oon proh-bleh-mah)
What's the problem?	¿Cuál es el problema?	(koo-ahl ehs ehl proh-bleh-mah)
Are you...?	¿Está...?	(eh-stah)
Are you OK?	¿Está bien?	(eh-stah bee-ehn)
Are you sick?	¿Está enfermo(a)?	(eh-stah ehn-fehr-moh(ah))
Are you hurt?	¿Está lastimado(a)?	(eh-stah lah-stee-mah-doh(ah))
What happened?	¿Qué pasó?	(keh pah-soh)
I can help you.	Yo puedo ayudarle.	(yoh poo-eh-doh ah-yoo-dahr-leh)

Lesson 1: Commands (*Mandatos*)

be careful	cuidado	(koo-ee-dah-doh)
bring	traiga	(trah-ee-gah)
bring it	tráigalo(a)	(trah-ee-gah-loh(lah))
clean	limpie	(leem-pee-eh)
clean it	limpielo(a)	(leem-pee-eh-loh(lah))
come	venga	(behn-gah)
come here	venga aquí	(behn-gah ah-kee)
cut	corte	(kohr-teh)
cut it	córtelo(a)	(kohr-teh-loh(lah))
do	haga	(ah-gah)
do it	hágalo(a)	(ah-gah-loh(lah))
do it now	hágalo ahora	(ah-gah-loh ah-oh-rah)
drain	desagüe	(deh-sah-goo-eh)
drain it	désagüelo(a)	(deh-sah-goo-eh-loh(lah))
empty	vacíe	(bah-see-eh)
empty it	vacíelo(a)	(bah-see-eh-loh(lah))
fill	llene	(yeh-neh)
fill it	llénelo(a)	(yeh-neh-loh(lah))
finish	termine	(tehr-mee-neh)
finish it	terminelo(a)	(tehr-mee-neh-loh(lah))
fold	doble	(doh-bleh)
fold it	dóblelo(a)	(doh-bleh-loh(lah))
follow	sigame	(see-gah)
follow me	sígame	(see-gah-meh)
give	dé	(deh)
give me	deme	(deh-meh)
give me it	démelo(a)	(deh-meh-loh(lah))
go	vaya	(bah-yah)
go there	vaya allí	(bah-yah ah-ye)
help	ayude	(ah-yoo-deh)
help me	ayúdeme	(ah-yoo-deh-meh)
help him/her	ayúdele	(ah-yoo-deh-leh)
hurry up	apúrese	(ah-poo-reh-seh)
listen	escuche	(ehs-koo-cheh)
listen to me	escúcheme	(ehs-koo-cheh-meh)
look	mire	(mee-reh)
look here	mire aquí	(mee-reh ah-kee)
lower	baje	(bah-heh)
lower it	bájelo(a)	(bah-heh-loh(lah))
measure	mida	(mee-dah)
measure it	mídalo(a)	(mee-dah-loh(lah))
move	muévase	(moo-eh-bah-seh)
move back	muévase para atrás	(moo-eh-bah-seh pah-rah ah-trahs)
pick up	recoja	(reh-koh-hah)
pick it up	recójalo(a)	(reh-koh-hah-loh(lah))
plug in	enchufe	(ehn-choo-feh)
plug it in	enchúfelo(a)	(ehn-choo-feh-loh(lah))
pour	descargue	(dehs-kahr-geh)
pour it	descárguelo(a)	(dehs-kahr-geh-loh(lah))
pull	jale	(hah-leh)
pull it	jálelo(a)	(hah-leh-loh(lah))
push	empuje	(ehm-poo-heh)
push it	empújelo(a)	(ehm-poo-heh-loh(lah))
put	ponga	(pohn-gah)
put it	póngalo(a)	(pohn-gah-loh(lah))
put away	guarde	(goo-ahr-deh)

7-5/16"
7.3125"
185.738mm



SPANISH FOR LANDSCAPING

4-7/8"
4.875"
123.825mm

4-7/8"
4.875"
123.825mm

7-5/16"
7.3125"
185.738mm

put it away
rinse
rinse it
show
show me
sit down
sit here
stay
stay here
stop
stop that
take
take it
tell
tell me
throw away
throw it away
turn off
turn it off
turn on
turn it on
unplug
unplug it
use
use it
wait
wait for me
wait a moment
wash
wash it
write
write it
watch
watch me
watch him/her

guárdelo(a)
enjuague
enjuáguelo(a)
enseñe
enséñeme
síntese
síntese aquí
quédese
quédese aquí
pare
pare eso
tome
tómelo(a)
diga
dígame
bote
bótelo(a)
apague
apáguelo(a)
prenda
préndalo(a)
desenchufe
desenchúfelo(a)
use
úselo(a)
espere
espéreme
espere un momento
lave
lávelo(a)
escriba
escribalo(a)
mire
míreme
mírele

(goo-ahr-deh-loh(lah))
(ehn-hoo-ah-geh)
(ehn-hoo-ah-geh-loh(lah))
(ehn-seh-nyeh)
(ehn-seh-nyeh-meh)
(see-ehn-teh-seh)
(see-ehn-teh-seh ah-kee)
(keh-deh-seh)
(keh-deh-seh ah-kee)
(pah-reh)
(pah-reh eh-soh)
(toh-meh)
(toh-meh-loh(lah))
(dee-gah)
(dee-gah-meh)
(boh-teh)
(boh-teh-loh(lah))
(ah-pah-geh)
(ah-pah-geh-loh(lah))
(prehn-dah)
(prehn-dah-loh(lah))
(deh-sehn-choo-feh)
(deh-sehn-choo-feh-loh(lah))
(oo-seh)
(oo-seh-loh(lah))
(eh-speh-reh)
(eh-speh-reh-meh)
(eh-speh-reh oon moh-mehn-toh)
(lah-beh)
(lah-beh-loh(lah))
(eh-skree-bah)
(eh-skree-bah-loh(lah))
(mee-reh)
(mee-reh-meh)
(mee-reh-leh)

Lesson 2: Safety (Seguridad)

Be careful.
Watch for...
Watch for power lines.

Watch for stumps.

Watch for rocks.

Pay attention.
Danger
It's dangerous.
Ask...
Ask if you need help.

Don't work alone.
Report...
Report accidents.

Report accidents to me.

Tenga cuidado.
Cuidado con...
Cuidado con las líneas de electricidad.

Cuidado con los tocones.

Cuidado con las rocas.

Preste atención.
Peligro
Es peligroso.
Pregunte...
Pregunte si necesita ayuda.

No trabaje solo(a).
Reporte...
Reporte los accidentes.

Repórteme los accidentes.

(tehn-gah koo-ee-dah-doh)
(koo-ee-dah-doh kohn)
(koo-ee-dah-doh kohn lahs lee-neh-ahs deh eh-lehk-tree-see-dahd)
(koo-ee-dah-doh kohn lohs toh-kohn-ehs)
(koo-ee-dah-doh kohn lahs roh-kahs)
(preh-steh ah-tehn-see-ohn)
(peh-lee-groh)
(ehs peh-lee-groh-soh)
(preh-gooh-teh)
(preh-gooh-teh see neh-seh-see-tah ah-yoo-dah)
(noh trah-bah-heh soh-loh(lah))
(reh-pohr-teh)
(reh-pohr-teh lohs ahks-see-dehn-tehs)
(reh-pohr-teh-meh lohs ahks-see-dehn-tehs)

Lesson 7: Hiring (Contratando)

Do you want...?
Do you want a job?
Do you want to work?
I have a job for you.

I don't have a job for you.

Fill out...
Fill out the application.
What is your...?
name
last name
address
telephone number
date of birth
age
social security number

Write...
your last employer's name

your last employer's address

your job title
your salary
Are you applying for...?
full time
part time
temporary/seasonal
Do you have...?
Do you have another job?
Do you have transportation?
Do you have identification?

Do you have tools?
Do you know how to...?
Do you know how to do this job?

Are you a legal citizen?
Are you a legal resident?
I will call you.
Call me.
When?
When can you work?

When can you start?

You start tomorrow.
You start Monday.
salary
This will be your salary per hour.

This will be your salary per week.

We pay every Friday.
We pay every other Friday.

¿Quiere...?
¿Quiere un trabajo?
¿Quiere trabajar?
Tengo un trabajo para usted.

No tengo un trabajo para usted.

Llene...
Llene la solicitud.
¿Cuál es su...?
nombre
apellido
dirección
número de teléfono
fecha de nacimiento
edad
número de seguro social

Escriba...
el nombre de su último empleador

la dirección de su último empleador

su título de trabajo
su salario
¿Está aplicando para...?
tiempo completo
tiempo parcial
temporario
¿Tiene...?
¿Tiene otro trabajo?
¿Tiene transportación?
¿Tiene identificación?

¿Tiene herramientas?
¿Sabe cómo...?
¿Sabe cómo hacer este trabajo?

¿Es un ciudadano legal?
¿Es un residente legal?
Le llamaré
Lámeme.
¿Cuándo?
¿Cuándo puede trabajar?

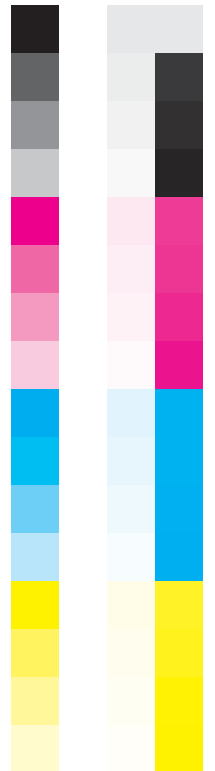
¿Cuándo puede empezar?

Empieza mañana.
Empieza lunes.
salario
Este será su salario por hora.

Este será su salario semanal.

Pagamos cada viernes.
Pagamos cada otro viernes.

(ke-eh-reh)
(ke-eh-reh oon trah-bah-hoh)
(ke-eh-reh trah-bah-hahr)
(tehn-goh oon trah-bah-hoh pah-rah oo-stehd)
(noh tehn-goh oon trah-bah-hoh pah-rah oo-stehd)
(yeh-neh)
(yeh-neh lah soh-lee-see-tood)
(koo-ahl ehs soo)
(nohm-breh)
(ah-peh-yee-doh)
(dec-rehk-see-ohn)
(noo-meh-roh deh teh-leh-foh-noh)
(feh-chah deh nah-see-mee-ehn-toh)
(eh-dahd)
(noo-meh-roh deh seh-gooh-roh soh-see-ahl)
(eh-skree-bah)
(ehl nohm-breh deh soo ool-tee-moh ehm-pleh-ah-dohr)
(lah dee-rehk-see-ohn deh soo ool-tee-moh ehm-pleh-ah-dohr)
(soo tee-too-loh deh trah-bah-hoh)
(soo sah-lah-ree-oh)
(eh-stah ah-plee-kahn-doh pah-rah)
(tee-ehm-poh kohm-pleh-toh)
(tee-ehm-poh pahr-see-ahl)
(tehm-poh-rah-ree-oh)
(tee-eh-neh)
(tee-eh-neh oh-troh trah-bah-hoh)
(tee-eh-neh trahs-pohr-tah-see-ohn)
(tee-eh-neh ee-dehn-tee-fee-kah-see-ohn)
(tee-eh-neh eh-trah-mee-ehn-tahs)
(sah-beh koh-moh)
(sah-beh koh-moh ah-sehr eh-steh trah-bah-hoh)
(ehs oon see-oo-dah-dah-noh leh-gahl)
(ehs oon reh-see-dehn-teh leh-gahl)
(leh yah-mah-reh)
(yah-meh-meh)
(koo-ahn-doh)
(koo-ahn-doh poo-eh-deh trah-bah-hahr)
(koo-ahn-doh poo-eh-deh ehm-peh-sahr)
(ehm-pee-eh-sah mah-nyah-nah)
(ehm-pee-eh-sah loo-nehs)
(sah-lah-ree-oh)
(eh-steh seh-rah soo sah-lah-ree-oh pohr oh-rah)
(eh-steh seh-rah soo sah-lah-ree-oh seh-mah-nahl)
(pah-gah-mohs kah-dah bee-eh-nehs)
(pah-gah-mohs kah-dah oh-troh bee-eh-nehs)



4-7/8"
4.875"
123.825mm

4-7/8"
4.875"
123.825mm

SPANISH FOR LANDSCAPING

the lift
the pruners
the chainsaw
the handsaw
the blower
the broom
the power edger
the string trimmer

el levantador
las tijeras
la motosierra
la sierra de mano
la sopladora
la escoba
la cortadora de filos
la cortadora de cuerda

(ehl leh-bahn-tah-**dohr**)
(lahs tee-**heh**-rahs)
(lah moh-toh-see-**eh**-rrah)
(lah see-**eh**-rrah deh **mah**-noh)
(lah soh-plah-**doh**-rah)
(lah eh-**skoh**-bah)
(lah kohr-tah-**doh**-rah deh **fee**-lohs)
(lah kohr-tah-**doh**-rah deh koo-**ehr**-dah)
(reh-**kohr**-teh-loh(lah))
(reh-**kohr**-teh-loh(lah) ah loh **lahr**-goh deh lah **bah**-yah)
(reh-**kohr**-teh-loh(lah) ah loh **lahr**-goh dehl eh-dee-**fee**-see-oh)
(reh-**kohr**-teh-loh(lah) **ahn**-tehs deh kohr-**tahr**-loh)
(reh-**kohr**-teh lohs ehks-**treh**-mohs)
(reh-**tee**-reh)
(reh-**tee**-reh **toh**-dahs lahs **rah**-mahs)

Report accidents to your supervisor.
You must wear...
You must wear safety glasses.
You must wear gloves.
You must wear ear plugs.
You must wear a harness.
You must wear a hardhat.

Repórtelo los accidentes a su supervisor. (reh-**pohr**-teh-leh lohs ahks-see-**dehn**-tehs ah soo soo-pehr-bee-**sohr**)
Debe usar... (deh-beh oo-**sahr**)
Debe usar gafas de seguridad. (**deh**-beh oo-**sahr** **gah**-fahs deh seh-goo-ree-**dahd**)
Debe usar guantes. (**deh**-beh oo-**sahr** goo-**ahn**-tehs)
Debe usar tapones de oído. (**deh**-beh oo-**sahr** tah-**pohn**-ehs deh oh-**ee**-doh)
Debe usar arnés. (**deh**-beh oo-**sahr** ahr-**nes**)
Debe usar un casco duro. (**deh**-beh oo-**sahr** oon **kahs**-koh **doo**-roh)

Trim it...
Trim it along the fence.

Recórtelo(a)...
Recórtelo(a) al lo largo de la valla.

(reh-**kohr**-teh-loh(lah))
(reh-**kohr**-teh-loh(lah) ah loh **lahr**-goh deh lah **bah**-yah)

Don't put...
Don't put your fingers here.
Don't put your hand here.
Don't touch.
Don't smoke.

No ponga...
No ponga los dedos aquí.
No ponga la mano aquí.
No toque.
No fume.

(noh **pohn**-gah)
(noh **pohn**-gah lohs **deh**-dohs ah-**kee**)
(noh **pohn**-gah lah **mah**-noh ah-**kee**)
(noh **toh**-keh)
(noh **foo**-meh)

Trim it along the building.

Recórtelo(a) al lo largo del edificio.

(reh-**kohr**-teh-loh(lah) ah loh **lahr**-goh dehl eh-dee-**fee**-see-oh)

Turn off...
Turn it off.

Apague...
Apáguelo(a).

(ah-**pah**-geh-loh(lah))
(see-**eh**-rreh)

Trim it before mowing it.

Recórtelo(a) antes de cortarlo.

(reh-**kohr**-teh-loh(lah) **ahn**-tehs deh kohr-**tahr**-loh)

Close it.
Cover it.

Cierre...
Cúbralo(a).

(see-**eh**-rreh-loh(lah))
(**koo**-brah)

Trim the ends.

Recorte los extremos.

(reh-**kohr**-teh lohs ehks-**treh**-mohs)

Close...
Close it.

Cierre...
Cúbralo(a).

(see-**eh**-rreh-loh(lah))
(**koo**-brah)

Remove...

Retire...

(reh-**tee**-reh)

Unplug the cord.
Lift...

Desenchúfelo(a).
Desenchufe el cable.

(deh-sehn-**choo**-feh-loh(lah))
(deh-sehn-**choo**-feh ehl **kah**-bleh)

Remove all branches.

Retire todas las ramas.

(reh-**tee**-reh **toh**-dahs lahs **rah**-mahs)

Use the emergency shut off.

Use el trancador de emergencia.

(leh-**bahn**-teh kohn soos pee-**ehr**-nahs)

Lesson 6: Clean Up (Limpiando)

Clean...
Clean the area.
Clean the area with water.

Limpie...
Limpie el área.
Limpie el área con agua.

(**leem**-pee-eh)
(**leem**-pee-eh ehl **ah**-reh-ah)
(**leem**-pee-eh ehl **ah**-reh-ah kohn **ah**-goo-ah)

Use both hands.
Wash your hands.

Use las dos manos.
Lávese las manos.

(**oo**-seh oon koh-yah-**reen**)
(**oo**-seh lah kah-rreh-**tee**-yah)

Clean the area with the blower.

Limpie el área con la sopladora.

(**leem**-pee-eh ehl **ah**-reh-ah kohn lah soh-plah-**doh**-rah)

Read...
Read it.

Lea...
Léalo(a).

(leh-**bahn**-teh)
(leh-**bahn**-teh kohn soos pee-**ehr**-nahs)

Put...

Ponga...

(**pohn**-gah)

Read the information.

Lea la información.

(**oo**-seh lah kah-rreh-**tee**-yah)
(**oo**-seh lah kah-**rreh**-tah)

Put all the trash...

Ponga toda la basura...

(**pohn**-gah **toh**-dah lah bah-**soo**-rah)

Lesson 3: Equipment Operation and Maintenance (Funcionamiento y Mantenimiento del Equipo)

before using it
after using it
everyday
all the time
Let me...
Let me show you.
Show me.
Show him/her.
Check...
Check the air pressure.

antes de usarlo(a)
después de usarlo(a)
todos los días
siempre
Déjeme...
Déjeme enseñarle.
Enséñeme.
Enséñele.
Chequee...
Chequee la presión del aire.

(**ahn**-tehs deh oo-**sahr**-loh(lah))
(deh-spoo-**ehs** deh oo-**sahr**-loh(lah))
(**toh**-dohs lohs **dee**-ahs)
(see-**ehm**-preh)
(**deh**-heh-meh)
(**deh**-heh-meh ehn-seh-**nyahr**-leh)
(ehn-**seh**-nyeh-meh)
(ehn-**seh**-nyeh-leh)
(cheh-**keh**-eh)
(cheh-**keh**-eh lah preh-see-**ohn** dehl **ah**-ee-reh)

Put all the trash in the dumpster.

Ponga toda la basura en el contenedor.

(**pohn**-gah **toh**-dah lah bah-**soo**-rah ehn ehl kah-mee-**ohn**)

Check the belts.
Check the gas level.

Chequee las correas.
Chequee el nivel de la gasolina.

(**oo**-seh lah dohs **mah**-nohs)
(lah-beh-seh lahs **mah**-nohs)

Put all the trash in the trailer.

Ponga toda la basura en el tráiler.

(**pohn**-gah **toh**-dah lah bah-**soo**-rah ehn ehl **trah**-ee-lehr)

Check the oil level.

Chequee el nivel del aceite.

(**oo**-seh lah dohs **mah**-nohs)

Put everything in the truck.

Ponga todo en el camión.

(**pohn**-gah **toh**-doh ehn ehl kah-mee-**ohn**)

Check all parts.

Chequee todas las partes.

(**oo**-seh lah dohs **mah**-nohs)

Put everything in the garage.

Ponga todo en el garaje.

(**pohn**-gah **toh**-doh ehn ehl **gah**-rah-heh)

Put everything in the backyard.

Ponga todo en el jardín trasero.

(**pohn**-gah **toh**-doh ehn ehl hahr-**deen** trah-**seh**-roh)

Put away...

Guarde...

(**goo**-ahr-deh)

Put away all the tools.

Guarde todas las herramientas.

(**goo**-ahr-deh **toh**-dahs lahs eh-rrah-mee-**ehn**-tahs)

Put away all the materials.

Guarde todos los materiales.

(**goo**-ahr-deh **toh**-dohs lohs mah-teh-ree-**ah**-lehs)

Leave...

Deje...

(**deh**-heh)

Leave the materials.

Deje los materiales.

(**deh**-heh lohs mah-teh-ree-**ah**-lehs)

Leave the tools.

Deje las herramientas.

(**deh**-heh lahs eh-rrah-mee-**ehn**-tahs)

Don't leave anything.

No deje nada.

(noh **deh**-heh **nah**-dah)

Wash...

Lave...

(**lah**-beh)

Wash the truck.

Lave el camión.

(**lah**-beh ehl kah-mee-**ohn**)

Wash the tools.

Lave las herramientas.

(**lah**-beh lahs eh-rrah-mee-**ehn**-tahs)

Cover...

Cubra...

(**koo**-brah)

Cover the area.

Cubra el área.

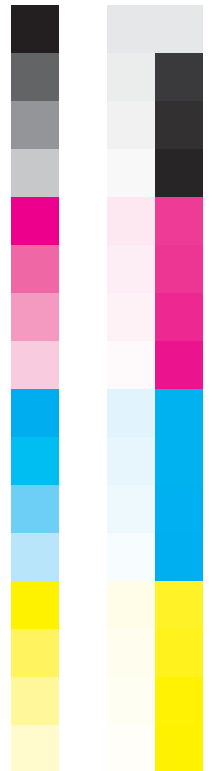
(**koo**-brah ehl **ah**-reh-ah)

Cover the area with a tarp.

Cubra el área con un cobertor.

(**koo**-brah ehl **ah**-reh-ah kohn oon koh-behr-**tohr**)

7-5/16"
7.3125"
185.738mm



SPANISH FOR LANDSCAPING

4-7/8"
4.875"
123.825mm

4-7/8"
4.875"
123.825mm

7-5/16"
7.3125"
185.738mm

Fill...
Fill the machines.
Mix...
Mix oil and gas.

Use...
Use unleaded gas.

Use this lubricant.
Change...
Change the oil.
Clean...
Clean the filter.
Clean the machine.

Lesson 4: Landscaping Installation (Instalación de Jardinería)

Unload...
Unload the truck.
Unload 3 pallets.
before you plant
after you plant
Begin...
Begin here.
Begin at the edging.
Begin with the trees.

Begin with the shrubs.

Finish...
Finish here.
Clear/Clean...
Clear the area.
Level/Grade...
Level the area.
Cover...
Cover the area.
Remove...
Remove everything.
Remove the rocks.
Remove the debris.
Remove the roots.
Remove a little more.
Remove the burlap sack.
Remove the basket.
Do not remove it.
Add...
Add more.
Add a little more.
Use...
the mower
the chainsaw
the pickaxe
the rake
the tractor
the chain
the stakes
the dumpster
the weedkiller
the chipper/shredder

Llene...
Llene las máquinas.
Mezcle...
Mezcle aceite y gasolina.

Use...
Use la gasolina sin plomo.

Use este lubricante.
Cambie...
Cambie el aceite.
Limpie...
Limpie el filtro.
Limpie la máquina.

Descargue...
Descargue el camión.
Descargue tres paletes.
antes de plantar
después de plantar
Empiece...
Empiece aquí.
Empiece en el borde.
Empiece con los árboles.

Empiece con los arbustos.

Termine...
Termine aquí.
Limpie...
Limpie el área.
Nivele...
Nivele el área.
Cubra...
Cubra el área.
Retire...
Retire todo.
Retire las rocas.
Retire los escombros.
Retire las raíces.
Retire un poco más.
Retire el saco.
Retire la cesta.
No lo (la) retire.
Añada...
Añada más.
Añada un poco más.
Use...
la cortacésped
la motosierra
el pico
el rastrillo
el tractor
la cadena
las estacas
el contenedor
el herbicida
la trituradora

(yeh-neh)
(yeh-neh lahs mah-kee-nahs)
(meh-skleh)
(meh-skleh ah-seh-ee-teh ee gah-soh-lee-nah)
(oo-seh)
(oo-seh lah gah-soh-lee-nah seen ploh-moh)
(oo-seh eh-steh loo-bree-kahn-teh)
(kahn-bee-eh)
(kahn-bee-eh ehl ah-seh-ee-teh)
(leem-pee-eh)
(leem-pee-eh ehl feel-troh)
(leem-pee-eh lah mah-kee-nah)

(deh-skahr-geh)
(deh-skahr-geh ehl kah-mee-ohn)
(deh-skahr-geh trehs pah-leh-tehs)
(ahn-tehs deh plahn-tahr)
(deh-spo-ehs deh plahn-tahr)
(ehm-pee-eh-seh)
(ehm-pee-eh-seh ah-kee)
(ehm-pee-eh-seh ehn ehl bohr-deh)
(ehm-pee-eh-seh kohn lohs ahr-boh-lehs)
(ehm-pee-eh-seh kohn lohs ahr-boos-tohs)
(tehr-mee-neh)
(tehr-mee-neh ah-kee)
(leem-pee-eh)
(leem-pee-eh ehl ah-reh-ah)
(nee-beh-leh)
(nee-beh-leh ehl ah-reh-ah)
(koo-brah)
(koo-brah ehl ah-reh-ah)
(reh-tee-reh)
(reh-tee-reh loh toh-doh)
(reh-tee-reh lahs roh-kahs)
(reh-tee-reh lohs eh-skohm-brohs)
(reh-tee-reh lahs rah-ee-sehs)
(reh-tee-reh oon poh-koh mahs)
(reh-tee-reh ehl sah-koh)
(reh-tee-reh lah sehs-tah)
(moh loh(lah) reh-tee-reh)
(ah-nyah-dah)
(ah-nyah-dah mahs)
(ah-nyah-dah oon poh-koh mahs)
(oo-seh)
(lah kohr-tah-sehs-pehd)
(lah moh-toh-see-eh-rrah)
(ehl pee-koh)
(ehl rah-stree-yoh)
(ehl trahk-tohr)
(lah kah-deh-nah)
(lahs eh-stah-kahs)
(ehl kohn-teh-neh-dohr)
(ehl ehr-bee-see-dah)
(lah tree-too-rah-doh-rah)

the trimmer
the shredded material

the tarp
the compost/manure
the scoop shovel
the flat shovel
the drum roller
water
fertilizer
Follow...
Follow this line.
Move...
Move it.
Move it forward/back.

Move it to the right/left.

Move it higher/lower.

Move all sprinkler heads.

Put...
Put steel edging here.

Put fabric here.
Water it.
Water it thoroughly.

Be careful of ...
Be careful of sprinkler lines.

Be careful of power lines.

Lay out...
Lay out the sod.
Lay out 20 rolls.

Lay out the plants.
Dig...
Dig the hole.
Dig the hole deeper.

Dig the hole wider.

Lesson 5: Property Maintenance (Mantenimiento de la Propiedad)

Start...
Start here.
Start on the outside.

Mow...
Mow this área.
Mow in a clean pattern.

Mow diagonally.
Use...
the ladder

la cortadora
el material triturado

el cobertor
el abono
la pala
la pala plana
el rodillo
agua
fertilizante
Siga...
Siga esta línea.
Mueva...
Muévelo(a).
Muévelo(a) adelante/atrás.

Muévelo(a) a la derecha/izquierda.

Muévelo(a) más alto(a)/bajo(a).

Mueva todas las cabezas de la regadera.

Ponga...
Ponga los bordes de acero aquí.

Ponga el tejido aquí.
Mójelo(a).
Mójelo(a) completamente.

Cuidado con...
Cuidado con las líneas de la regadera.
Cuidado con las líneas de electricidad.

Extienda...
Extienda el celote.
Extienda veinte rollos.

Extienda las plantas.
Cave...
Cave el hoyo.
Cave el hoyo más profundo.

Cave el hoyo más ancho.

(lah kohr-tah-doh-rah)
(ehl mah-teh-ree-ahl tree-too-rah-doh)
(ehl koh-behr-tohr)
(ehl ah-boh-noh)
(lah pah-lah)
(lah pah-lah plah-nah)
(ehl roh-dee-yoh)
(ah-goo-ah)
(fehr-tee-lee-sahn-teh)
(see-gah)
(see-gah eh-stah lee-neh-ah)
(moo-eh-bah)
(moo-eh-bah-loh(lah))
(moo-eh-bah-loh(lah) ah-deh-lahn-teh/ah-trahs)

(moo-eh-bah-loh(lah) ah lah deh-reh-chah/ee-skee-eh-rah)
(moo-eh-bah-loh(lah) mahs ahl-toh(tah)/bah-hoh(hah))
(moo-eh-bah toh-dahs lahs kah-beh-sahs deh lah reh-gah-dehr-ah)

(pohn-gah)
(pohn-gah lohs bohr-dehs deh ah-sehr-oh ah-kee)
(pohn-gah ehl teh-hee-doh ah-kee)
(moh-heh-loh(lah))
(moh-heh-loh(lah) kohm-pleh-tah-mehn-teh)

(koo-ee-dah-doh kohn)
(koo-ee-dah-doh kohn lahs lee-neh-ahs deh lah reh-gah-deh-rah)
(koo-ee-dah-doh kohn lahs lee-neh-ahs deh eh-lehk-tree-see-dahd)
(ehks-tee-ehn-dah)
(ehks-tee-ehn-dah ehl seh-loh-teh)
(ehks-tee-ehn-dah beh-eeen-teh roh-yohs)
(ehks-tee-ehn-dah lahs plahn-tahs)
(kah-beh)
(kah-beh ehl oh-yoh)
(kah-beh ehl oh-yoh mahs proh-fohn-doh)
(kah-beh ehl oh-yoh mahs ahh-choh)

(ehm-pee-eh-seh)
(ehm-pee-eh-seh ah-kee)
(ehm-pee-eh-seh dehs-deh ah-foo-eh-rah)
(kohr-teh)
(kohr-teh eh-steh ah-reh-ah)
(kohr-teh ehn oon mees-moh pah-trohn)
(kohr-teh dee-ah-goh-nahl-mehn-teh)
(oo-seh)
(lah eh-skah-leh-rah)

